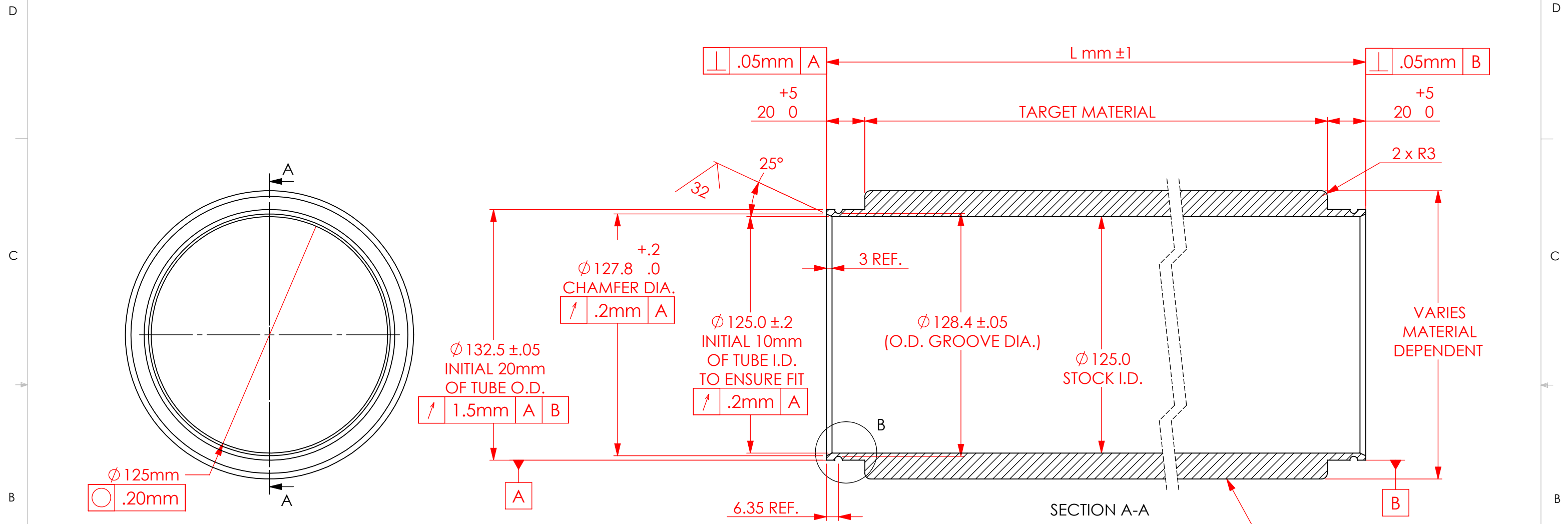
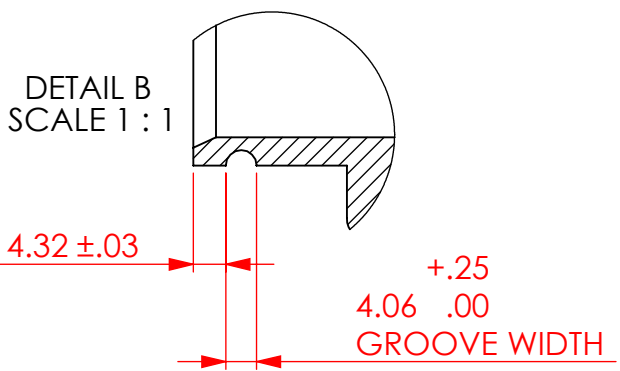


8	7	6	5	4	3	2	1
program #	op	machine	\$ EACH Qty. 2		REVISIONS		
.		lathe			ZONE	REV.	DATE
						F	2/8/2010
					DESCRIPTION		APPROVED
					UPDATED TOLERANCING		DC

8	7	6	5	4	3	2	1
			\$ EACH Qty. 2		REVISIONS		
ZONE	REV.	DESCRIPTION			DATE	APPROVED	
	F	UPDATED TOLERANCING			2/8/2010	DC	



**NOTE: DIMENSIONS ARE TYPICAL ON BOTH ENDS OF THE PART. FOR OUT OF ROUND TUBES, ENDS MUST BE BORED TO DIMENSION SHOWN.**



- NOTES:
1. BREAK AND DEBURR ALL EDGES .25mm MAX.
  2. CLEAN PART FOR USE IN A VACUUM ENVIRONMENT.
  3. PACKAGE PART TO PROTECT FROM DAMAGE AND TO ENSURE CLEANLINESS.

UNLESS OTHERWISE SPECIFIED:		SPUTTERING COMPONENTS, INC.				
X = ± 1		5625 BRISA STREET				
.X = ± .5		SUITE A				
.XX = ± .25		LIVERMORE, CA 94550				
.XXX = ± .125		TITLE:				
INTERPRET GEOMETRIC TOLERANCING PER:		SCI METRIC TARGET				
WEIGHT		SIZE	DATE DRAWN	DWG. NO.	SCALE	REV
DRAWN BY		<b>B</b>	8/31/06	SCT	1:2	<b>F</b>
DO NOT SCALE DRAWING		MATERIAL: VARIES		FINISH:	SHEET 1 OF 1	